

North Dakota Behavioral Health System Implementation Support

Draft Approach for Discussion

October 2018

Bevin Croft, MPP, PhD

Human Services Research Institute



The HSRI recommendations were based on our analysis, principles of good and modern behavioral health systems, and the community's vision for system change

Invest in **prevention and early intervention**

Ensure **timely access** to behavioral health services

Expand **outpatient and community-based services**

Enhance and streamline **system of care for children and youth**

Continue **criminal justice** strategy

Recruit and retain a competent **workforce**

Expand **telebehavioral health**

Ensure values of **person-centeredness, cultural competence, and trauma-responsiveness**

Encourage and support **community involvement**

Partner with tribal nations to increase **health equity**

Diversify and enhance **funding**

The “bookend” recommendations from our 2018 analysis were created to support infrastructure for effective and ongoing system transformation



1: Develop a comprehensive implementation plan

Reconvene system stakeholders
Form an oversight steering committee
Establish work groups



13: Conduct ongoing, system-wide, data-driven monitoring of needs and access

Integrate data systems
Develop system metrics
Identify and target services to those with highest service costs

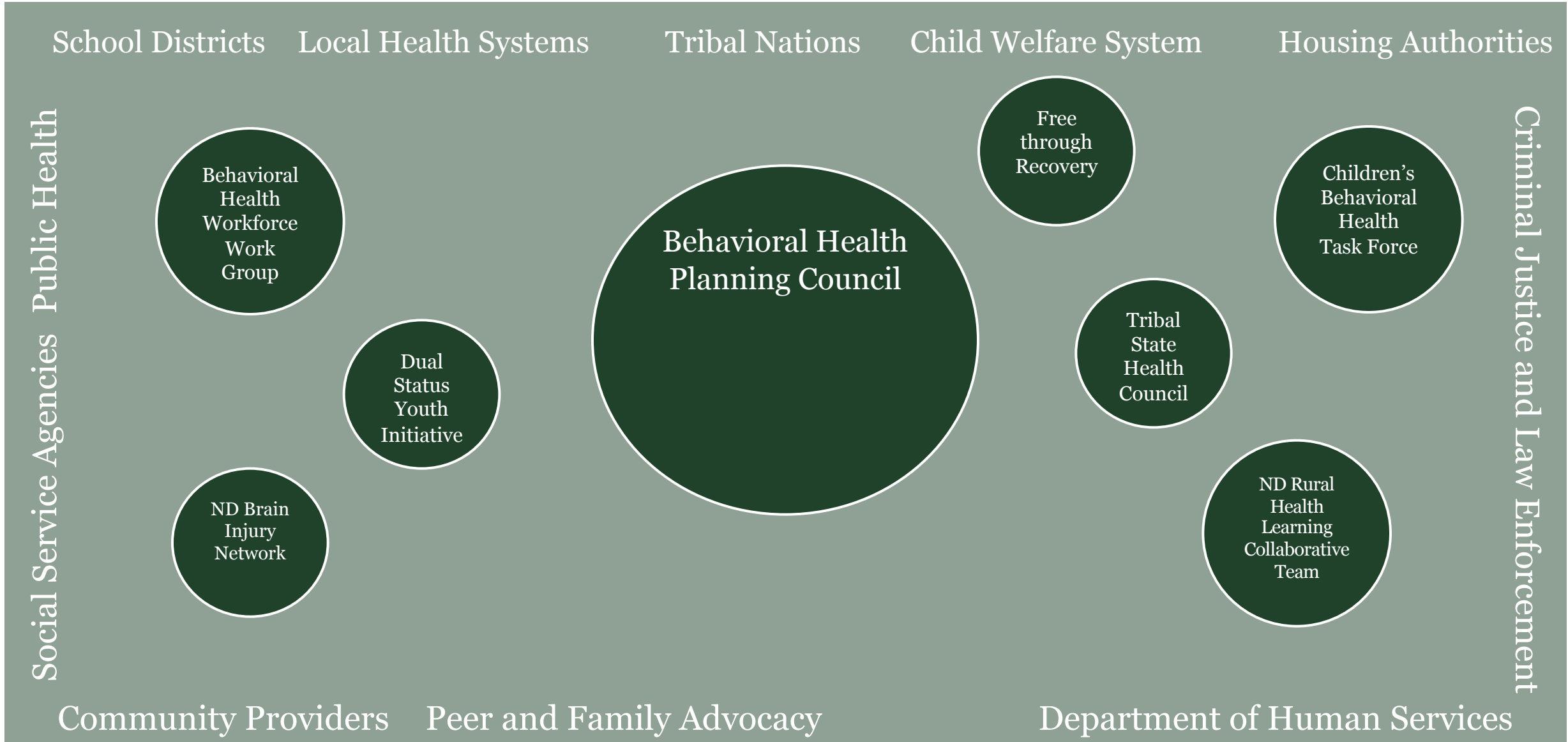
Our approach

Support **coordinated, data-driven system improvement activities** through the implementation of the recommendations from the *Behavioral Health System Study*, with a focus on the first and last (“bookend”) recommendations

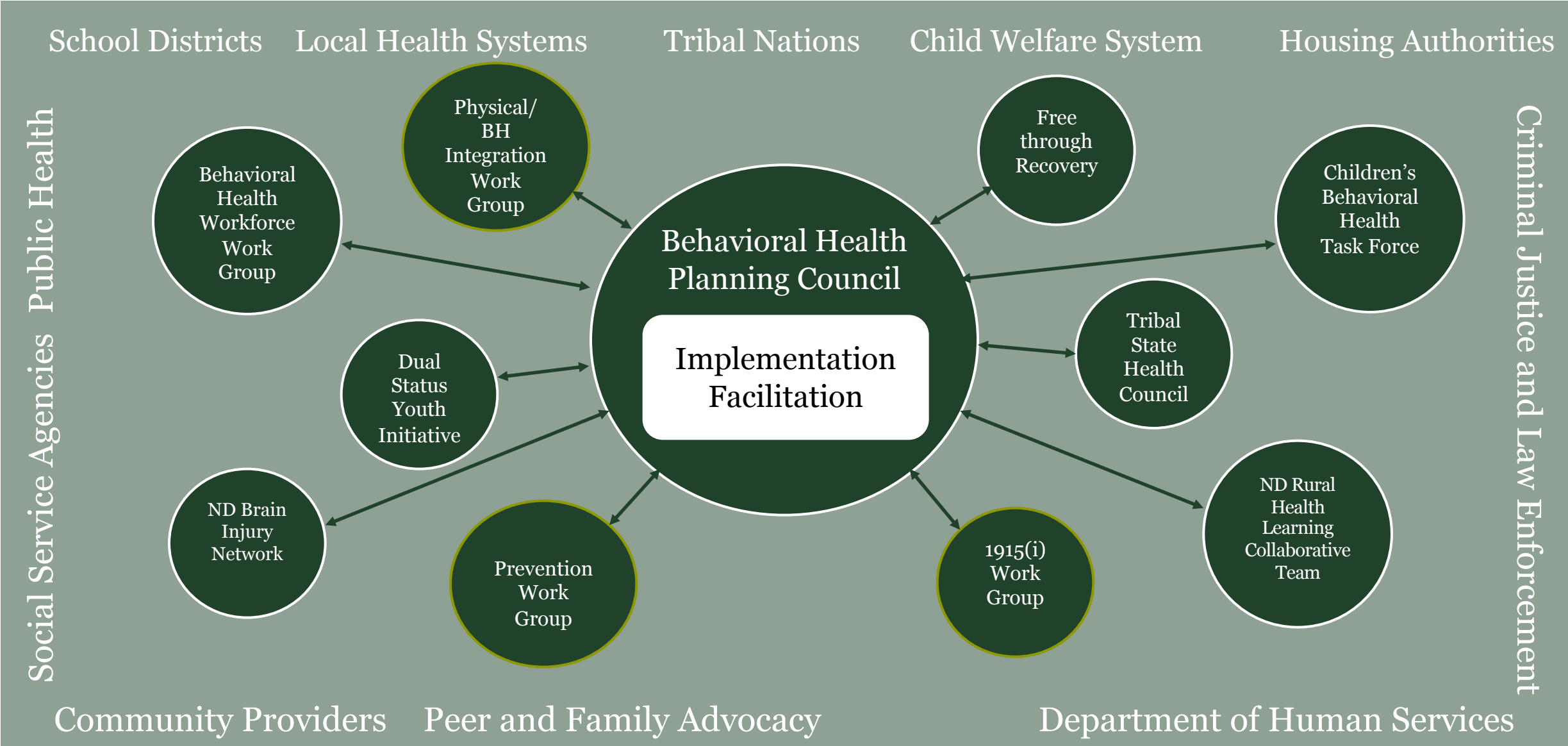
Set the course for the community to engage in **ongoing system monitoring, planning, and improvements** in the long-term



Sample View of the Current System



Proposed Roles and Functions



Four Phases of Work



Timeline and Deliverables



Goal Matrix Template

HSRI Report Recommendation	Primary Entities	Relevant Work Groups	Required Policy, Regulatory, or Legislative Actions	Priority	Status

After ratifying the initial goal matrix in Phase 1, we will develop a final strategic plan in Phase 2. It will include SMART goals, specific tasks, roles and responsibilities, priority/timeline, and indicators of progress/success that will be benchmarked during Phase 3 (Initiation)



Strategic Plan Protocol

- Articulation of roles (e.g. HSRI, state and local entities, BH Planning Council and other work groups)
- Strategy for ensuring ongoing alignment with existing initiatives
- Processes for group coordination and communication
- Processes for ensuring meaningful and ongoing stakeholder engagement

Thank You.

