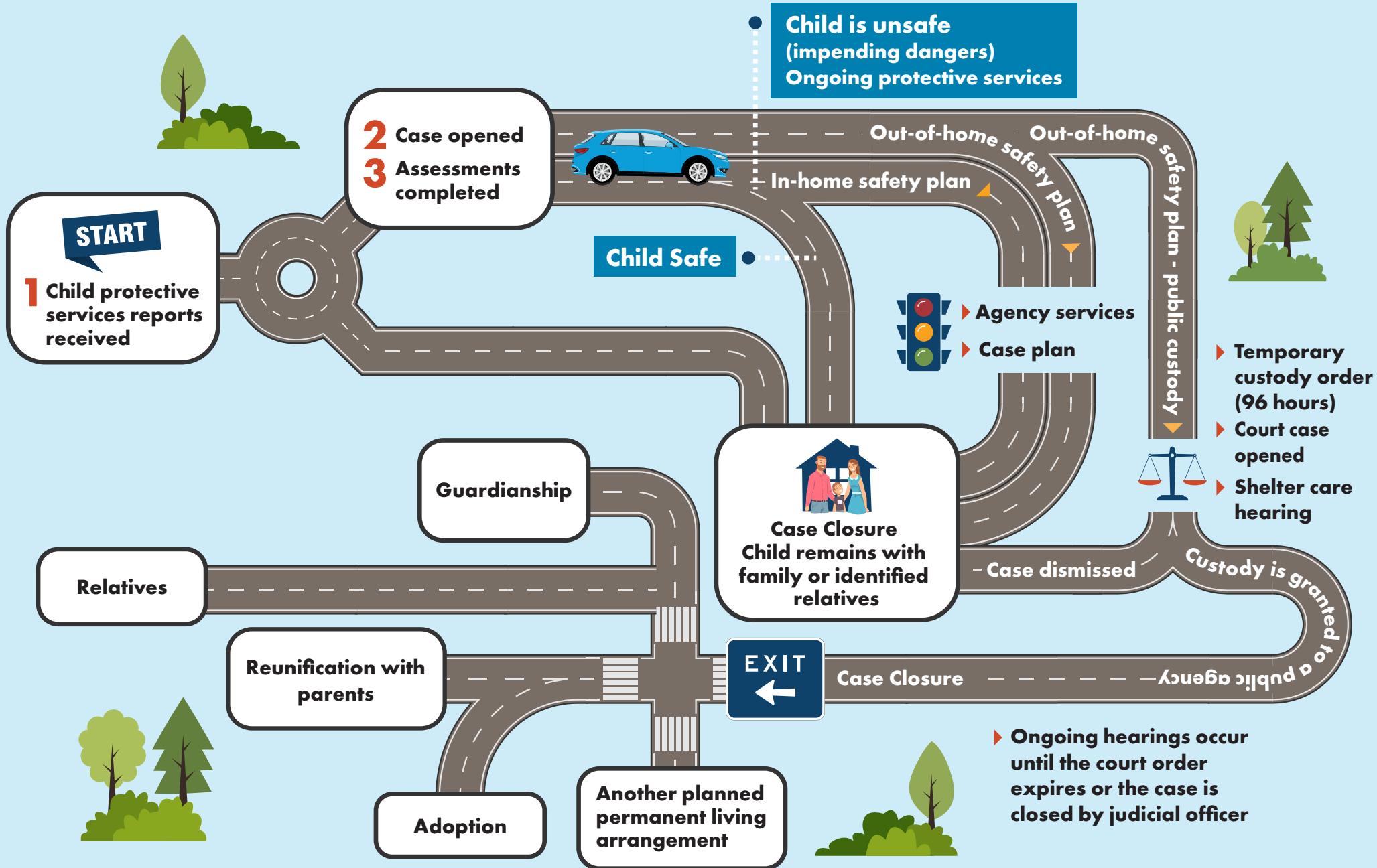


CHILD WELFARE SYSTEM ROADMAP



CHILD PROTECTION

- **ASSESSMENT:** A fact finding process designed to gather information that allows for staff to determine if a child meets the definition of an abused or neglected child. A determination either unconfirmed or confirmed where the subject's name is placed on the ND CPS Index. An assessment could be terminated in progress, which would result in case closure with no further action required.
- **CHILD PROTECTION SERVICES (CPS):** Services performed by an agency after a report of child abuse or neglect has been conducted. Services include assessments, planning, referral of treatment, coordination with referral sources, monitoring and delivery of services.
- **CPS CENTRALIZED INTAKE:** North Dakota's CPS call center where professional staff accept reports of suspected child abuse and neglect over the phone via 1-833-958-3500.
- **CONFIRMED:** It is determined a child meets the definition of an abused or neglected child based on the evidence gathered.
- **UNCONFIRMED:** It is determined based upon the evidence, that a child does not meet the definition of an abused or neglected child.

SERVICES/CASE MANAGEMENT

- **ADOPTION:** Safety decision when the court determines that a child in public custody will not be reunited with their parents. Adoption may be legally granted to an identified family as one of their own.
- **CASE MANAGEMENT:** Agency staff assigned to work with the family to determine the needs and services required to achieve a safe outcome. Staff is responsible to organize visitation, meet regularly with the parent and child/ren, work closely with referral sources for services, provide updates to the Court and coordinate various aspects of the case plan.
- **CASE PLAN:** Individualized set of goals developed with the family to enhance parental protective capacities and establish safety in the home.
- **CUSTODIAN:** Means a person or agency, other than a parent or legal guardian, given legal custody of the child by order of the Court. ND custodial agencies include a Human Service Zone, Division of Juvenile Services or a federally recognized Tribe.
- **GUARDIANSHIP:** Safety decision where the court determines that a child in public custody will not be reunited with their parents. Legal guardianship is permanent custody granted to a caregiver, but the child's parental rights remain intact.
- **PLACEMENT:** When it is determined a child is unsafe, a decision must be made regarding placement. A child may remain in their home with in-home safety plan and supports or a child may be placed in out-of-home care with relatives, placed in a licensed foster home, residential treatment facility, Supervised Independent Living setting, or other.
- **REUNIFICATION:** Safety decision to return the child to the parental home after determining impending danger threats can be controlled and the parent/caregiver protective capacities have been sufficiently enhanced.
- **SAFETY PLAN:** A written arrangement between parents/caregivers and the agency when a child is determined to be unsafe. A safety plan remains active as long as danger threats exist and may include in home or out of home placement arrangements.
- **SAFE CHILD:** When no threats of danger exist within the home, or parents/caregivers can protect the child from threats of danger, or the child is not vulnerable (age/development) to such threats.
- **UNSAFE CHILD:** When threats of danger exist in the home, and the child is vulnerable (age/development) to such threats, and parents/caregivers are unable to protect the child from the threats of danger.